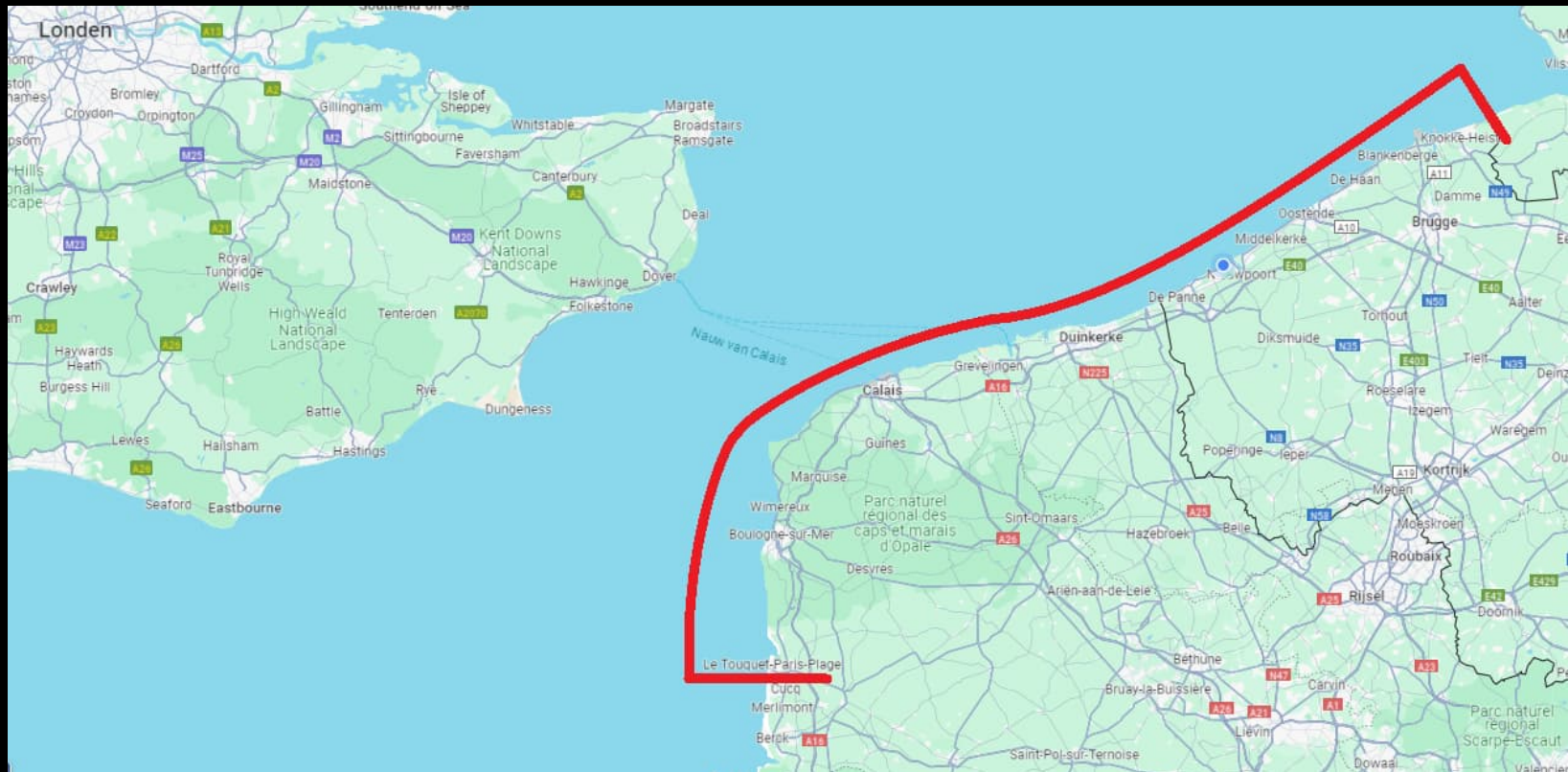


# “Bizarre en andere strandvondsten”

---

Aäron Fabrice de Kisangani



Amerikaanse boeien begroeid met Gewone eendenmosselen, *Lepas anatifera*



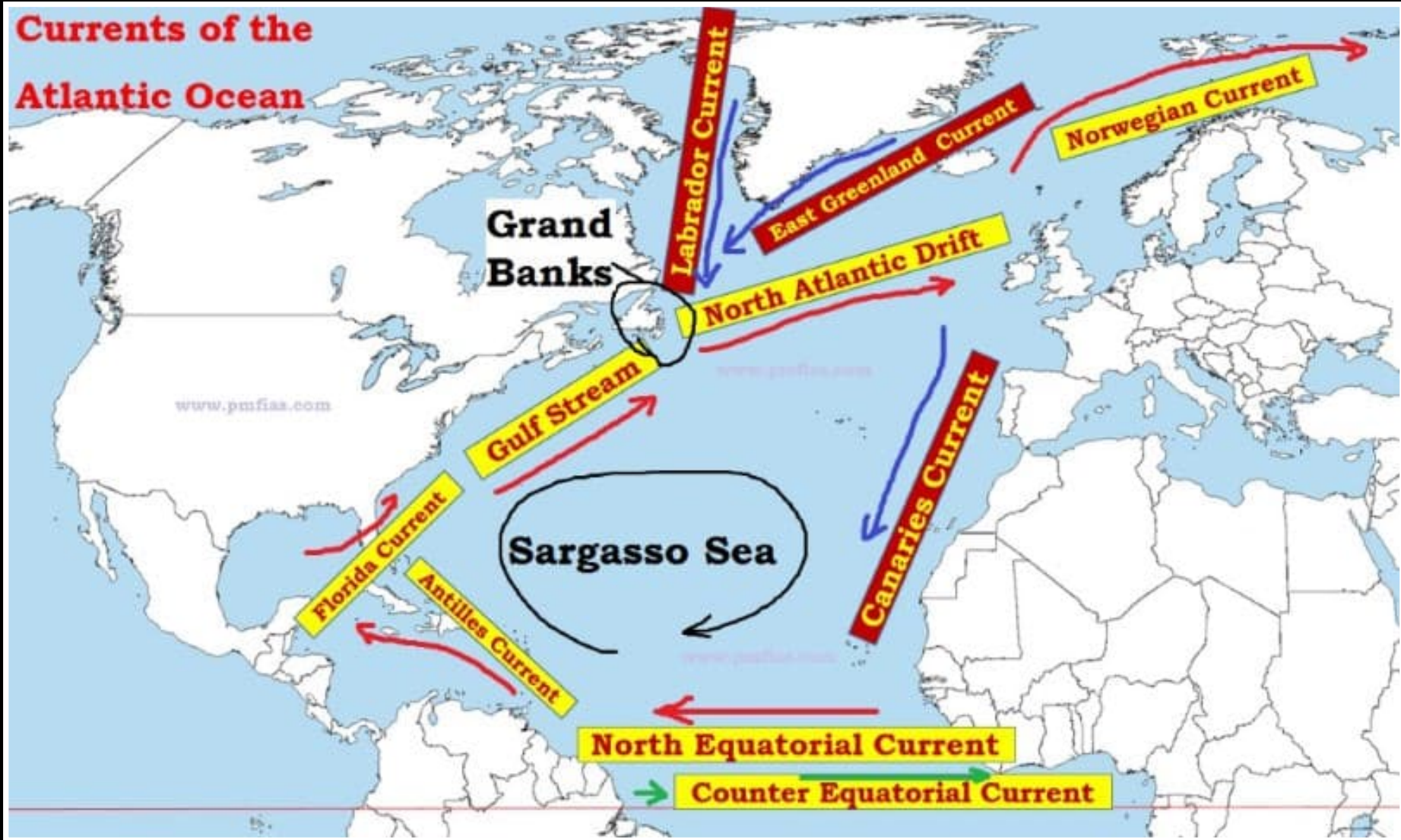








# Currents of the Atlantic Ocean





Colombuskrabben  
*Planes minutus*



Kokosnoot met Colombuskrab en *Lepas anatifera*

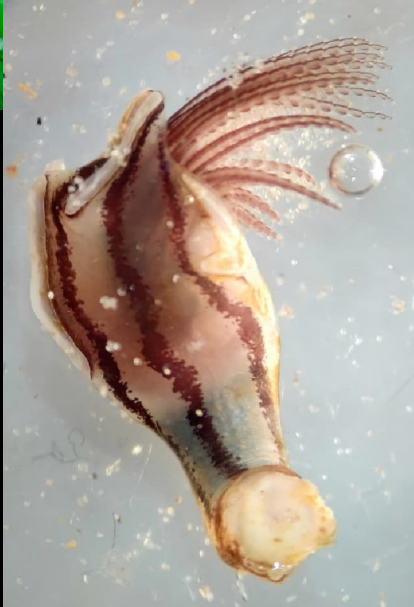




*Caprella andreae*



Viskist met Gestreepte Eendenmossel *Conchoderma virgatum*







Conchoderma  
virgatum



Dosima  
fascicularis



*Lepas hili*



Lepas  
pectinata



*Lepas anatifera*

Amerikaanse aaspotjes

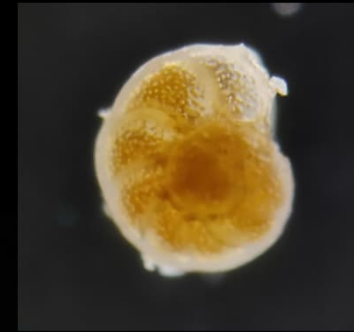




*Membranipora tuberculata*



*Tectura virginea*



*Idotea metallica*



*Galathea dispersa*



Slanke ringsprietslak *Facelina auriculata*





Scheepsafval begroeid met *Lepas anatifera* en *Lepas pectinata*





Visserskist met Suikerwier *Saccharina latissima*



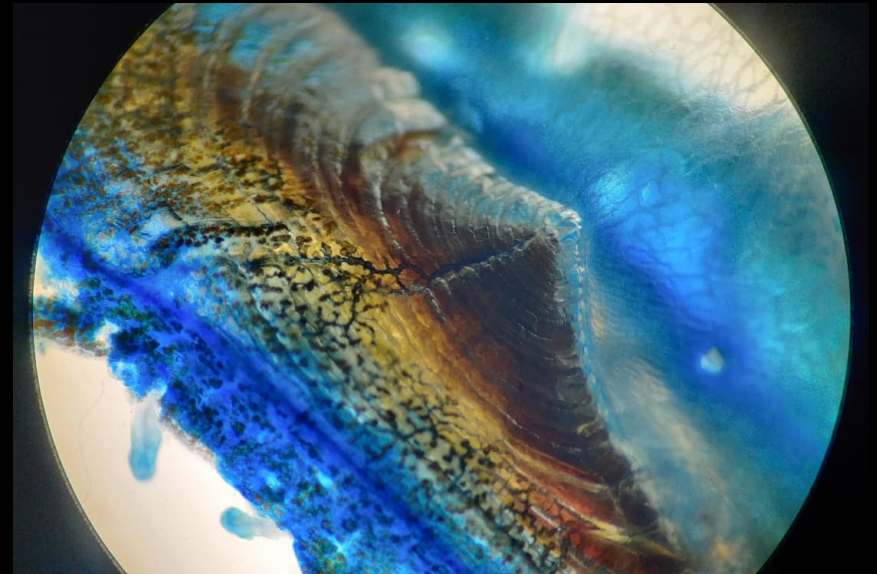


Stuk kreeftenfuik





Bezaantjes *Verella vellela*





Tropische drijfzaden









Grey Nickernut *Caesalpinia bonduc*



Zeehart, *Entada gigas*



Aangespoelde Ivoornoot aangeboord door larve van *Caryoborus chiriquensis*





Kortsnuitszeepaardjes *Hippocampus hippocampus*



Papegaaiduiker, *Fratercula arctica*





Voshaai *Alopias vulpinus*





Fossiele haaietanden



Steenkernen fossiele krabben





Prehistorische werktuigen



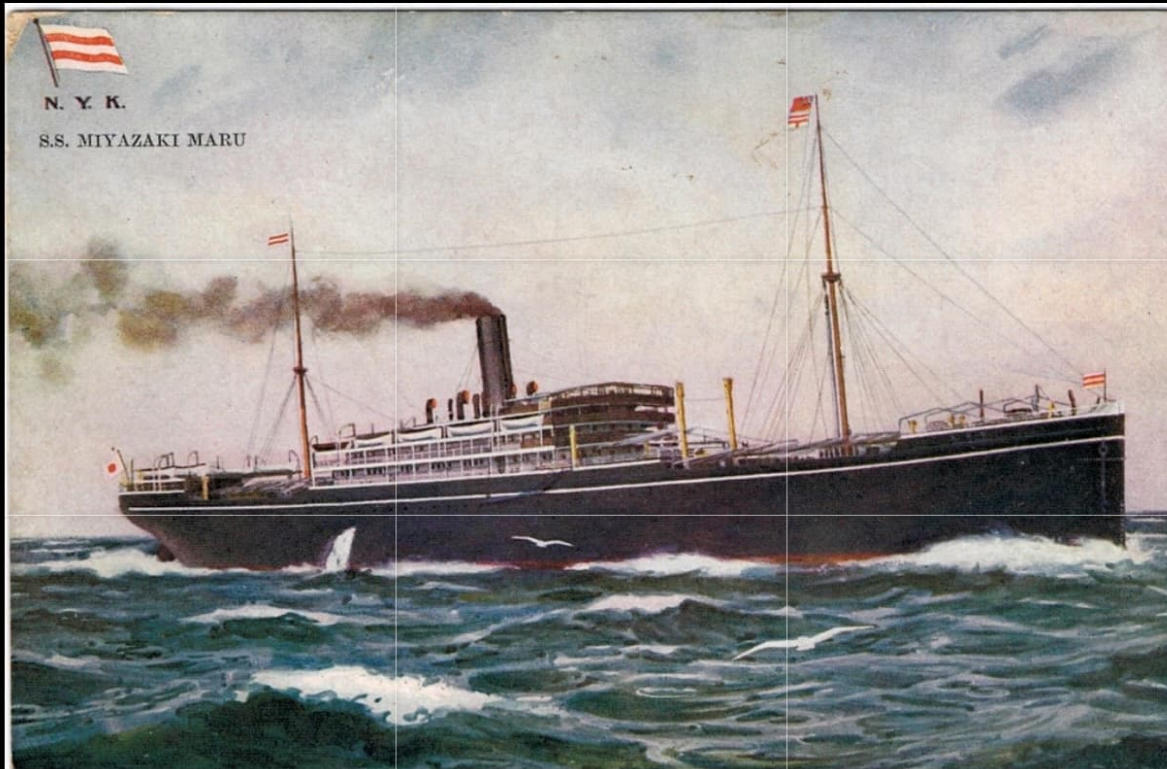


TJIPETIR mysterie, Gutta-percha blokken van West-Java



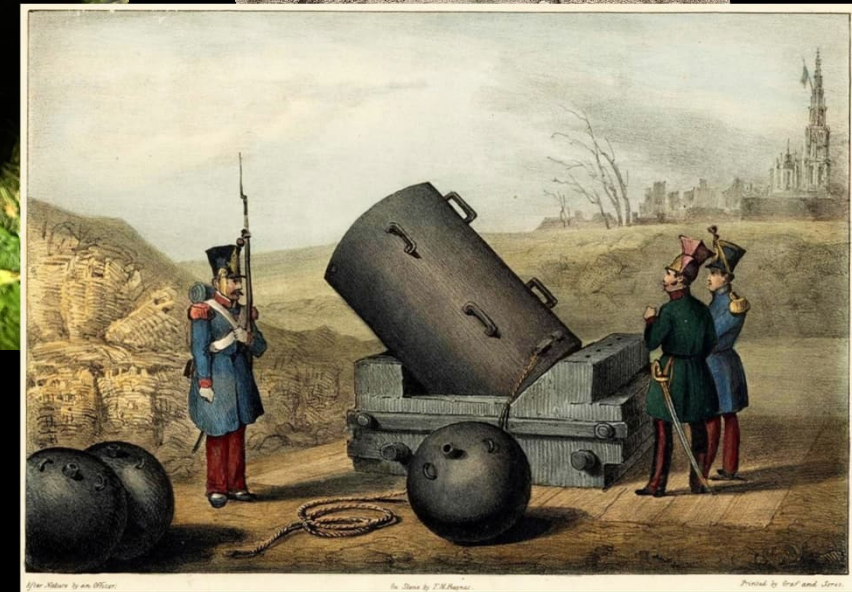


Miyazaki Maru opweg van Yokohama, Japan naar Londen werd getorpedeerd door Duitse U-88 duikboot in 1917.





17de – 18de eeuws Franse mortierkogel (Coehoorn)





Koperen telmuntje gegraveerd door Hanns Krauwinckel II tussen 1586-1635 te Neurenberg, Duitse Staten.



Lego-draak





**TOKIO EXPRESS ladingverlies**  
**13 februari 1997.**  
**4.8 miljoen stukjes LEGO**



**LEGO TO LOOK OUT FOR...**

Some bits of Lego from the spill turn up more regularly than others. These are the pieces beachcombers find most often. The numbers show the quantities lost overboard rather than those found by beachcombers.

**88,316**

**SETS OF FLOWERS**  
 These originally came in sets of four, with each flower attached to a central sprue, or doodah, as beachcombers call them. In the container were 32,000 white sets, 40,316 red and 16,000 yellow.

If they had separated at sea there would have been 441,580 flowers and sprues adrift, although many sets washed up intact.

**54,000**

**PIECES OF SEA GRASS**  
 These were destined for Lego sets such as Sting Ray Explorer, Shark Cage Cove and Discovery Station. Easy to recognise but harder to find these days.

**97,500**

**SCUBA TANKS**  
 'Old grey' scuba tanks featured in many ocean-themed Lego sets from 1997, including Diving Expedition Explorer, Deep Reef Refuge and Discovery Station. Still a regular strandline find.

**79,680**

**SPEAR GUNS**  
 Lost overboard were 53,120 yellow spear guns and 26,560 red. While yellow spear guns featured in 1997 Lego sets, such as Deep Reef Refuge and Shark Attack, red were included in Deep-Sea Bounty and Shark Cage Cove.

**8,100**

**GREY LINKS**  
 Not the most exciting of pieces as far as beachcombers are concerned, these 'old grey' links featured in Discovery Station, a Lego Divers set released in 1997.

**26,600**

**LIFE JACKETS**  
 Bright yellow life jackets came in quite a few Lego sets from 1997, including Scuba Squad and Deep Sea Bounty.

**50,000**

**BROOMS**  
 These were included in sets such as the Witch's Magic Manor, Night Lord's Castle and Witch's Windship. When they're mangled in with seaweed and driftwood on the strandline, these little brown broomsticks are difficult to spot.

**26,400**

**BITS OF SHIP RIGGING**  
 Measuring 5 inches long, these came in several Lego sets from 1997, including Pirates Perilous Pitfall where they were used to create the shipwreck and the Witch's Windship, where they formed part of the gondola pulled by the green dragon.

**92,400**

**CUTLASSES OR SWORDS**

A favourite find, these featured in various Lego sets from 1997, including Pirates Perilous Pitfall and the pirate ship Cross Bone Clipper. Once we found a Lego cutlass in a radpole-filled pond in the dunes, carried there on the crest of a wave during a storm.

**352,000**

**PAIRS OF FLIPPERS**  
 These divers' fins or flippers were shipped in pairs: 209,000 black, 121,000 blue and 22,000 red. If all the pairs had separated at sea, there would have been 1,056,000 pieces of plastic adrift: 704,000 flippers or fins and 352,000 sprues or doodahs. Not all broke apart, however.





Kerstversiering LUCKY SEVEN





## Otrivin flesjes





Drugstracker





Cocaine





## Vluchtelingenproblematiek









Paspoorten en ander persoonlijke bezittingen zoals uitzettingsbevelen, gsm's, treintickets, kleren, etc...





Massaal veel traangasgranaten en rubberen kogels gebruikt tegen vluchtelingen op de stranden in Noord-Frankrijk:





## Reddingsboei





